

CITY OF BEVERLY

DEPARTMENT OF PUBLIC SERVICES AND ENGINEERING

PLAN AND PROFILE OF ESSEX STREET AT EXIT 18 ROUNDAABOUT

IN THE CITY OF
BEVERLY
ESSEX COUNTY

CLIENT:
CITY OF BEVERLY

ENGINEERING DEPARTMENT

191 CABOT STREET
BEVERLY, MA 01915
PHONE: 978-605-2355

PROJECT:
**ESSEX STREET AT
EXIT 18
ROUNDAABOUT**

BEVERLY, MA

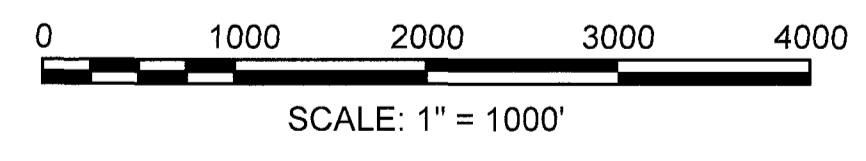
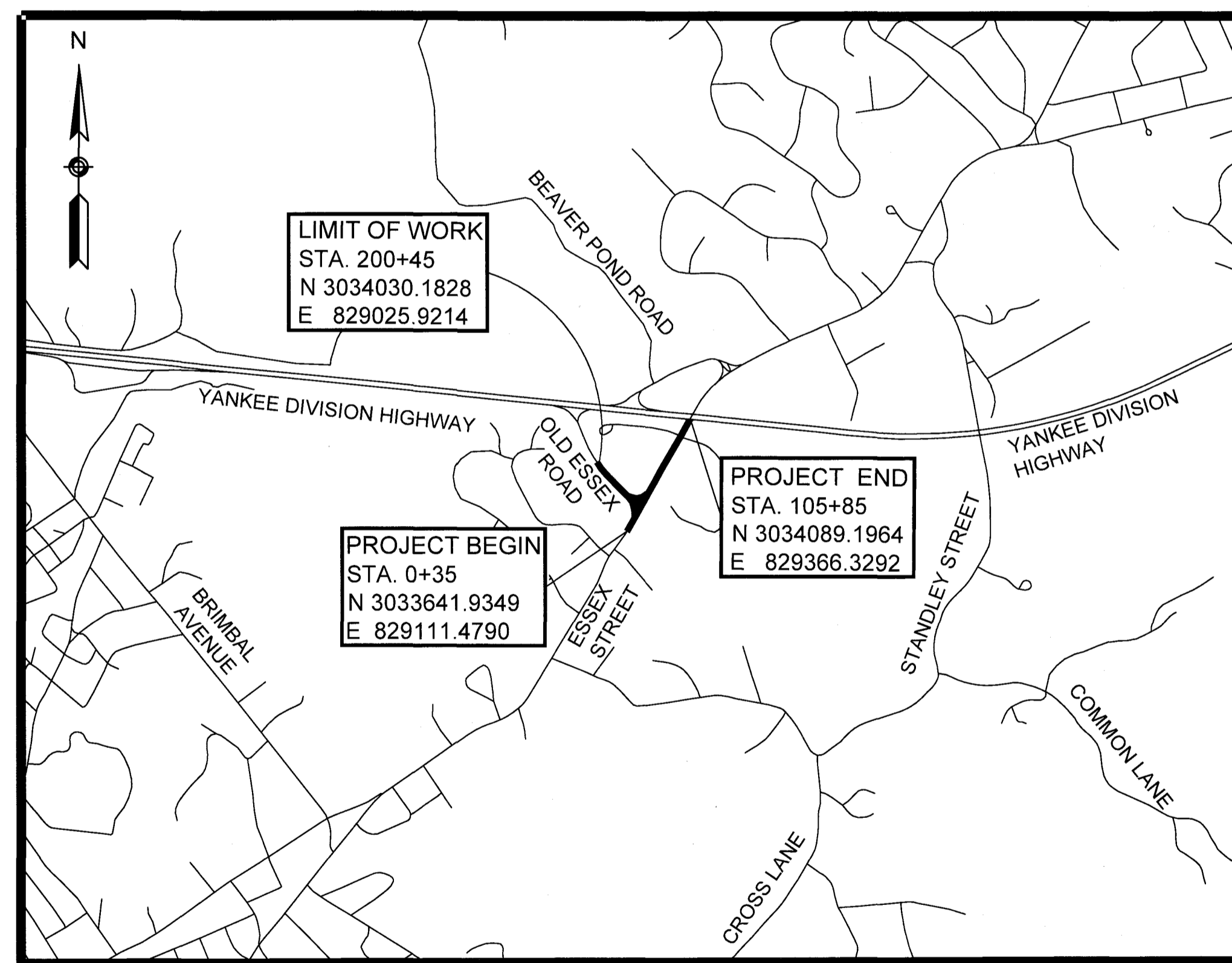
PREPARED BY:

WORLDTECH ENGINEERING

300 TRADECENTER, SUITE 5580
WOBURN, MA 01801
T: 781-933-4800
F: 781-933-4801

THE MASSACHUSETTS HIGHWAY DEPARTMENT STANDARD SPECIFICATIONS FOR HIGHWAYS AND BRIDGES DATED 1988, AS AMENDED, THE SUPPLEMENTAL SPECIFICATIONS DATED JULY 1, 2015, THE 2016 CONSTRUCTION STANDARD DETAILS, THE 2015 OVERHEAD SIGNAL STRUCTURE AND FOUNDATION STANDARD DRAWINGS, MASSDOT TRAFFIC MANAGEMENT PLANS AND DETAIL DRAWINGS, THE 2009 MANUAL ON UNIFORM TRAFFIC CONTROL DEVICES FOR STREETS AND HIGHWAYS WITH REVISIONS 1 & 2 AND MASSACHUSETTS AMENDMENTS, THE 1990 STANDARD DRAWINGS FOR SIGNS AND SUPPORTS, THE 1968 STANDARD DRAWINGS FOR TRAFFIC SIGNALS AND HIGHWAY LIGHTING, AND THE LATEST EDITION OF THE AMERICAN STANDARD FOR NURSERY STOCK, WILL GOVERN.

DESIGN DESIGNATION	ESSEX STREET	OLD ESSEX ROAD
DESIGN SPEED	35 MPH	35 MPH
ADT (2016)	13,475	6,560
ADT (2036)	14,820	7,215
K	8.6%	11.0%
D	59.0%	65.0%
T (PEAK HOUR)	12%	1%
T (AVERAGE DAY)	11%	1%
DHV	1,275	795
DDHV	750	515
FUNCTIONAL CLASSIFICATION	URBAN MINOR ARTERIAL	URBAN MINOR ARTERIAL



LENGTH OF PROJECT (ESSEX STREET) = 825.00 FEET = 0.16 MILES
LENGTH OF PROJECT (OLD ESSEX ROAD) = 235.00 FEET = 0.05 MILES

INDEX

SHEET NO.	DESCRIPTION
1	TITLE SHEET AND INDEX
2	LEGEND AND ABBREVIATIONS
3-4	TYPICAL SECTIONS
5-6	CONSTRUCTION DETAILS
7	CONSTRUCTION PLAN
8-11	PROFILES
12	CURB TIE AND GRADING PLAN
13	DRAINAGE AND UTILITY PLAN
14	SIGN AND PAVEMENT MARKING PLAN
15	SIGN SUMMARY
16-18	TEMPORARY TRAFFIC CONTROL PLANS
19	WHEELCHAIR AND DRIVEWAY SCHEDULE
20-21	CROSS SECTIONS

PROFESSIONAL CIVIL ENGINEER FOR
WORLDTECH ENGINEERING, LLC

NO.	DATE	REVISION

SCALE:	
DATE:	OCT. 2017
WTE PROJECT NO.	17-014.01
DESIGNED BY:	KMC
CHECKED BY:	KJS

DRAWING TITLE:

**TITLE SHEET
AND INDEX**

ORDER OF CONDITIONS DEP FILE NO. #5-1225

Filename: J:\Beverly\17-014.01 Beverly - Essex Street Traffic and Safety Improvements 2 Locations\Design\Drawings\17-014.01_HD2\17-014.01_HD2\Title Sheet.dwg

HIGHWAY GUARD DETAILS
 TANGENT END TREATMENT
 STA 1+18.82 LT TO STA 1+56.32 LT
 STA 201+70.75 LT TO STA 202+08.25 LT
 W-BEAM GUARDRAIL
 STA 0+73.00 LT TO STA 1+18.82 LT
 STA 201+18.51 LT TO STA 201+70.75 LT
 FLARED END TREATMENT
 STA 0+35.50 LT TO STA 0+73.00 LT
 STA 200+81.01 LT TO STA 201+18.51 LT

TRAFFIC SIGNAL CONDUIT
 NONE

DRAINAGE DETAILS
 SEE SHEET 13

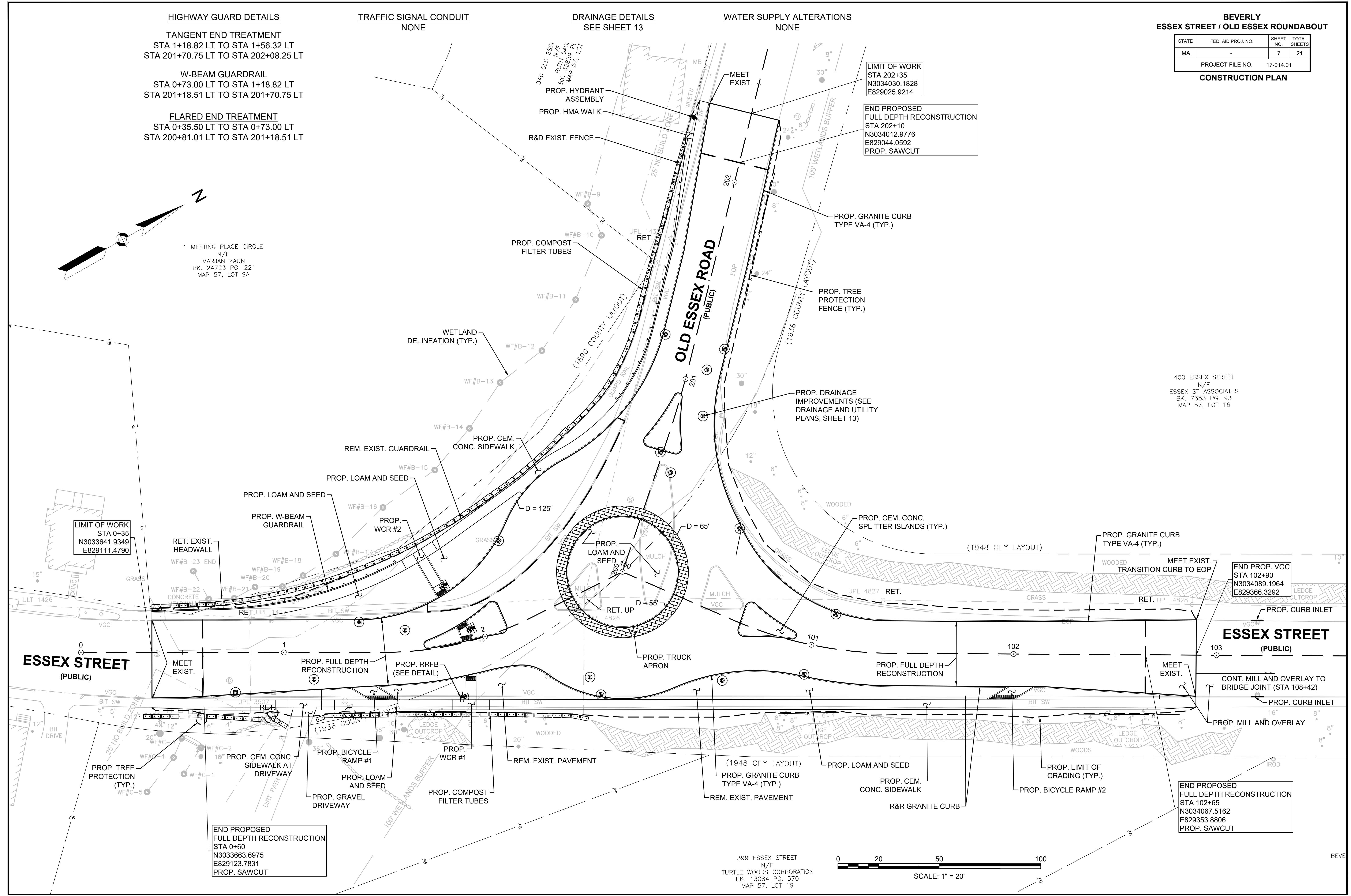
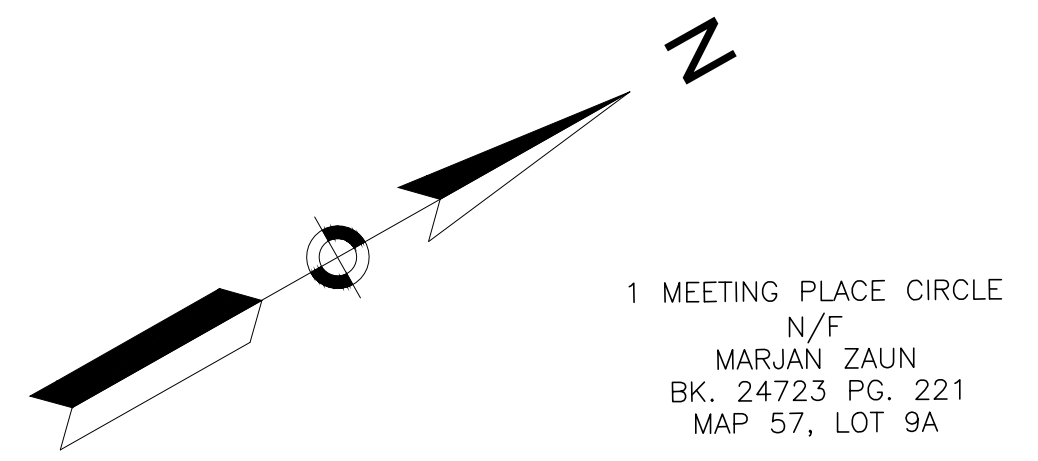
WATER SUPPLY ALTERATIONS
 NONE

BEVERLY
 ESSEX STREET / OLD ESSEX ROUNDABOUT

STATE	FED. AID PROJ. NO.	SHEET NO.	TOTAL SHEETS
MA	-	7	21

PROJECT FILE NO. 17-014.01

CONSTRUCTION PLAN



LIMIT OF WORK
 STA 202+35
 N3034030.1828
 E829025.9214

END PROPOSED
 FULL DEPTH RECONSTRUCTION
 STA 202+10
 N3034012.9776
 E829044.0592
 PROP. SAWCUT

400 ESSEX STREET
 N/F
 ESSEX ST ASSOCIATES
 BK. 7353 PG. 93
 MAP 57, LOT 16

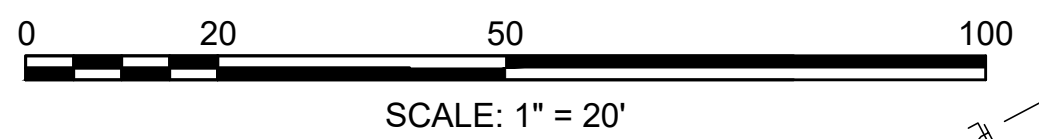
LIMIT OF WORK
 STA 0+35
 N3033641.9349
 E829111.4790

END PROP. VGC
 STA 102+90
 N3034089.1964
 E829366.3292

END PROPOSED
 FULL DEPTH RECONSTRUCTION
 STA 0+60
 N3033663.6975
 E829123.7831
 PROP. SAWCUT

END PROPOSED
 FULL DEPTH RECONSTRUCTION
 STA 102+65
 N3034067.5162
 E829353.8806
 PROP. SAWCUT

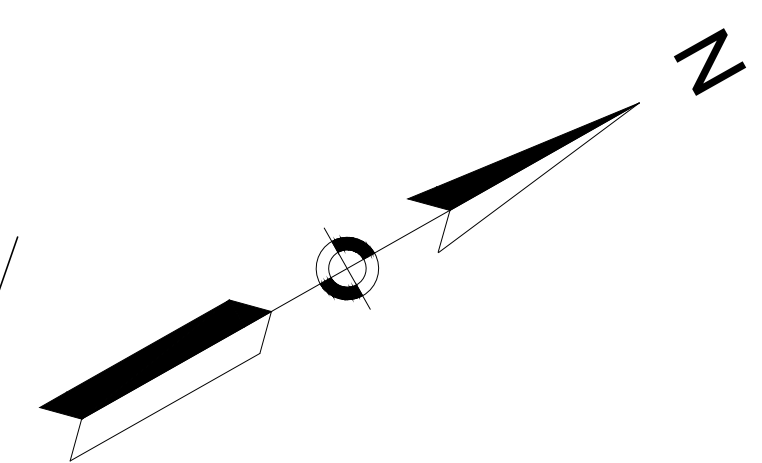
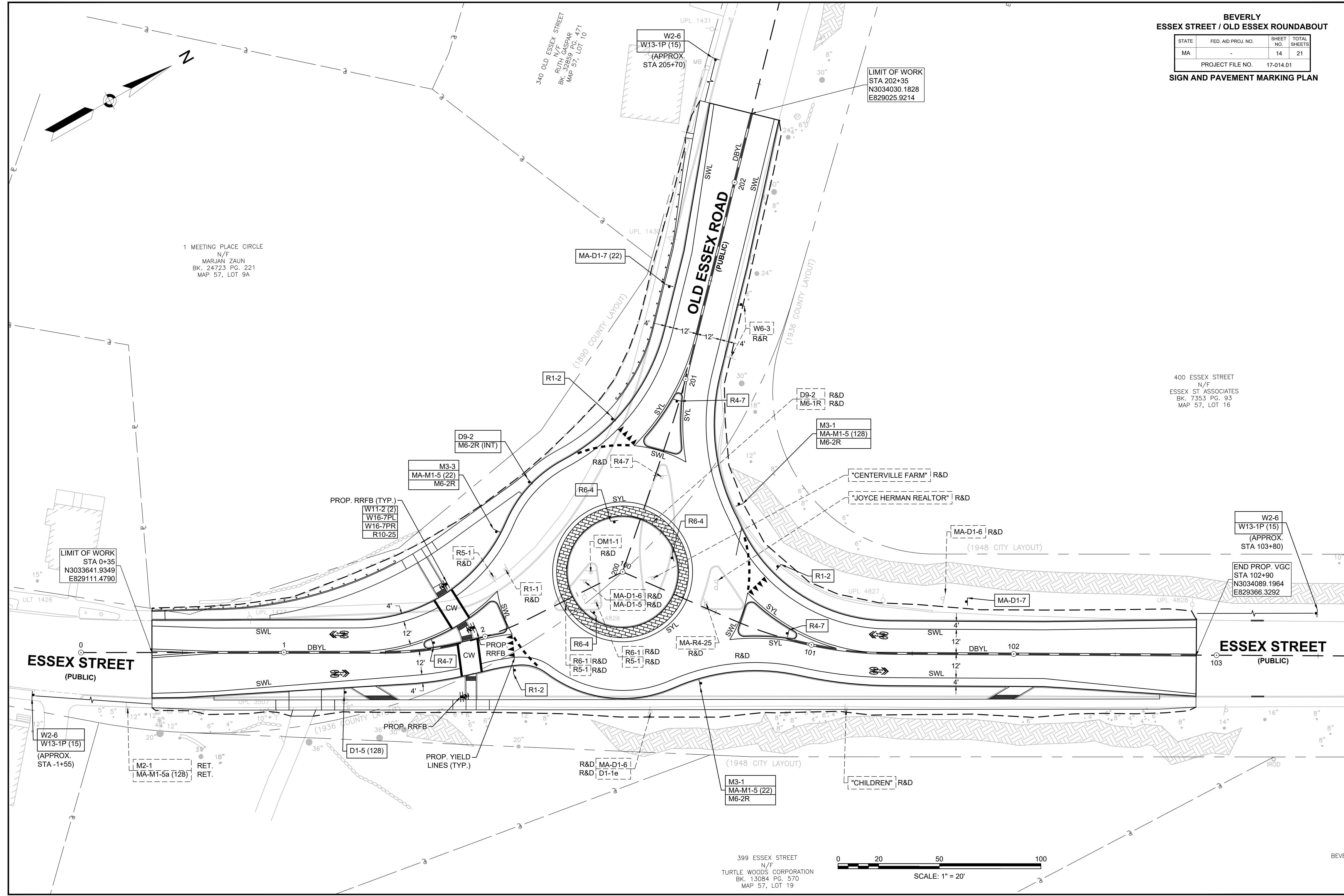
399 ESSEX STREET
 N/F
 TURTLE WOODS CORPORATION
 BK. 13084 PG. 570
 MAP 57, LOT 19



BEVERLY
ESSEX STREET / OLD ESSEX ROUNDABOUT

STATE	FED. AID PROJ. NO.	SHEET NO.	TOTAL SHEETS
MA	-	14	21
PROJECT FILE NO.		17-014.01	

SIGN AND PAVEMENT MARKING PLAN



1 MEETING PLACE CIRCLE
 N/F
 MARJAN ZAUN
 BK. 24723 PG. 221
 MAP 57, LOT 9A

340 OLD ESSEX STREET
 N/F
 RUTH GOSPAR
 BK. 32859 PG. 471
 MAP 57, LOT 10

LIMIT OF WORK
 STA 202+35
 N3034030.1828
 E829025.9214

400 ESSEX STREET
 N/F
 ESSEX ST ASSOCIATES
 BK. 7353 PG. 93
 MAP 57, LOT 16

LIMIT OF WORK
 STA 0+35
 N3033641.9349
 E829111.4790

END PROP. VGC
 STA 102+90
 N3034089.1964
 E829366.3292

ESSEX STREET
 (PUBLIC)

ESSEX STREET
 (PUBLIC)

OLD ESSEX ROAD
 (PUBLIC)

W2-6
 W13-1P (15)
 (APPROX.
 STA -1+55)

M2-1
 MA-M1-5a (128)
 RET.
 RET.

D1-5 (128)

PROP. YIELD LINES (TYP.)

R&D MA-D1-6
 R&D D1-1e

M3-1
 MA-M1-5 (22)
 M6-2R

"CHILDREN" R&D

399 ESSEX STREET
 N/F
 TURTLE WOODS CORPORATION
 BK. 13084 PG. 570
 MAP 57, LOT 19

